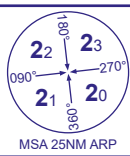


INSTRUMENT APPROACH CHART - ICAO

LONDON GATWICK



APP	126.825, 118.950, 129.025
TWR	124.230, 134.230, 121.500*
	121.805
ATIS	136.525

GATWICK DIRECTOR
GATWICK TOWER (*Emergency)
GATWICK GROUND
GATWICK INFORMATION

AD ELEVATION	203
THR ELEVATION	195
OBSTACLE ELEVATION	1007 AMSL (812) (ABOVE THR)
BEARINGS ARE MAGNETIC	

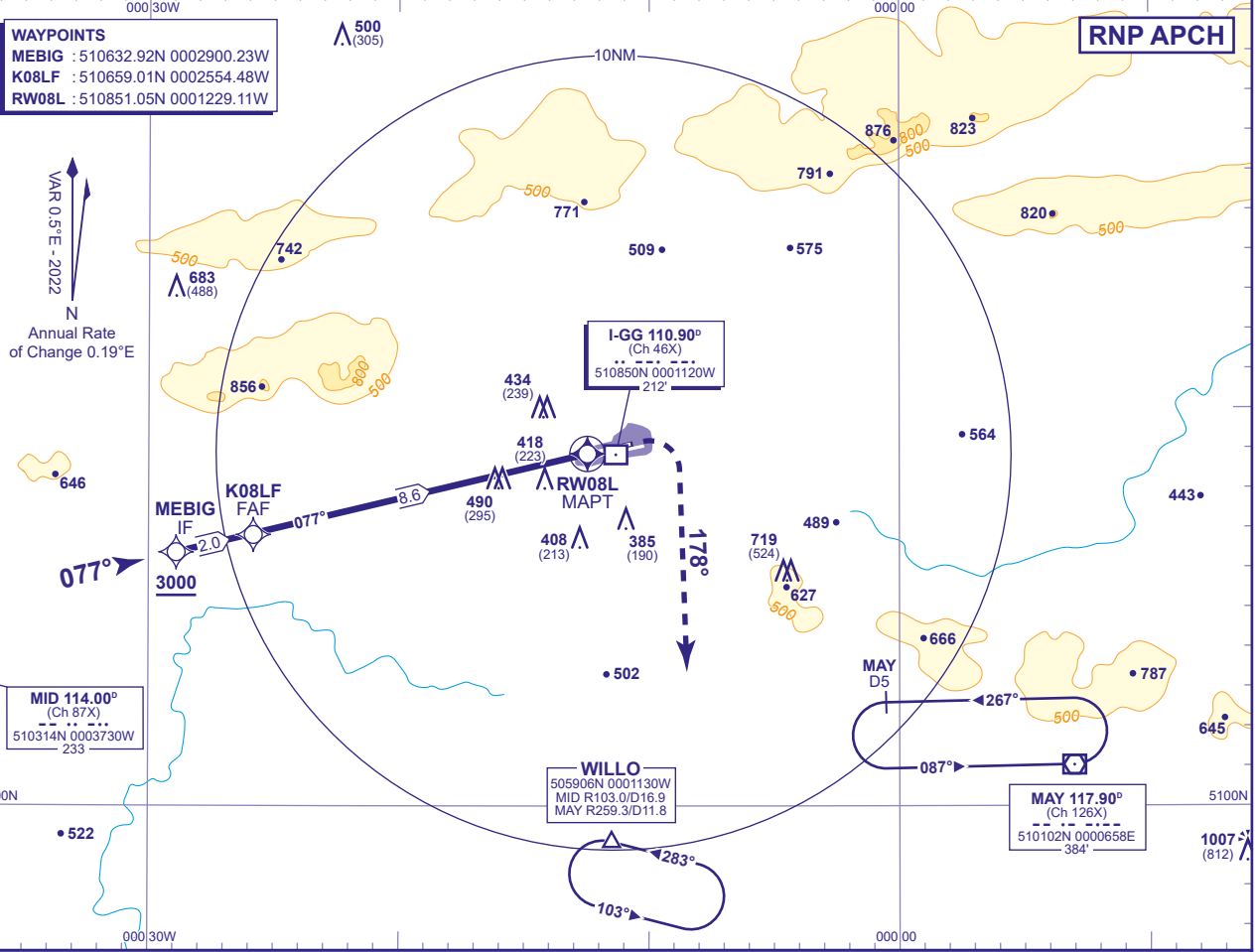
RNP
RWY 08L
(ACFT CAT A,B,C,D)

MIN TEMP -10°C
TRANSITION ALTITUDE 6000

WAYPOINTS
MEBIG : 510632.92N 0002900.23W
K08LF : 510659.01N 0002554.48W
RW08L : 510851.05N 0001229.11W

VAR 0.5°E - 2022
N
Annual Rate of Change 0.19°E

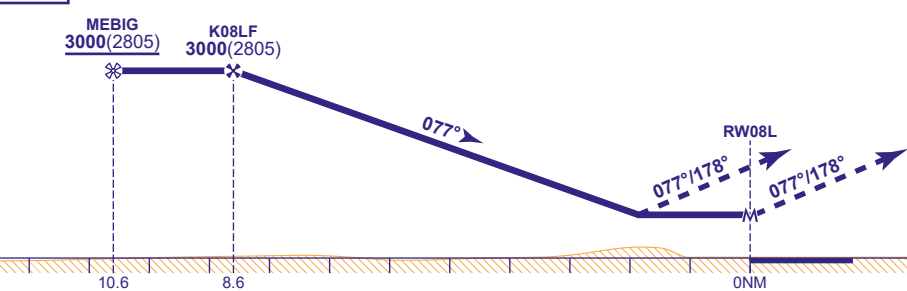
MID 114.00°
(Ch 87X)
510314N 0003730W
233



RECOMMENDED PROFILE VNAV - VERTICAL PATH ANGLE 3.0° (LNAV 5.24%), 318FT/NM

NM to RW08L	8	7	6	5	4	3	2
ALT(HGT)	2790(2595)	2470(2275)	2160(1965)	1840(1645)	1520(1325)	1200(1005)	880(685)

TCH 50



MAPt (LNAV): RW08L
Climb to **3000** - straight ahead until passing **2000** or **1NM** inbound **RW08L** whichever is later, turn right heading **178°** then as directed by ATC.
RCF: Proceed as above, and continue on heading **178°**, 2 minutes after initiating missed approach or passing **I-GG DME 7**, whichever is later, proceed to **MAY VOR** not above **3000**.

Aircraft Category	A	B	C	D	Rate of descent	G/S KT	160	140	120	100	80
OCA (OCH)	LNAV/VNAV	850(655)	850(655)	850(655)	900(705)	FT/MIN	850	740	640	530	420
	LNAV	850(655)	850(655)	850(655)	900(705)						
VM(C)OCA (OCH AAL)	Total Area	800(597)	800(597)	1020(817)	1120(917)						

NOTE 1 Pilots should 'Request RNP Approach' on first contact with Gatwick Director.
NOTE 2 Aircraft will be radar vectored to MEBIG.
NOTE 3 In the event of radio communications failure, follow conventional arrival procedures to establish on final approach course.
NOTE 4 See AD 2-EGKK-8-9 for data coding tables.
NOTE 5 An early initiation of the missed approach may require pilot intervention with the RNP system in order to comply with the 1NM inbound turn initiation point.
NOTE 6 The missed approach reverts to conventional navigation after passing **2000**.

CHANGE (8/25): MID/MAY VOR RECALIBRATED. WILLO HOLD REVISED.